

## Maxima 7 Spin Capsules



### Maxima 7 Spin Capsule

A simple to install, high strength anchor suitable for use in corrosive and damp environments when used in conjunction with galvanized or stainless steel studs. Rapid curing, extra heavy duty anchoring of threaded studs into solid concrete and stone. It is also suitable for overhead anchoring applications.

### Product Advantages

- More convenient usage on smaller projects than using a cartridge system
- Exact measure of resin required for each application
- Either end can be inserted into the hole
- Suitable for reduced anchor spacing and edge distances
- Suitable for cold temperature installation
- Ideal for installation in wet and damp conditions
- Vibration resistant

### Substrates

- Concrete
- Solid Block
- Solid Stone

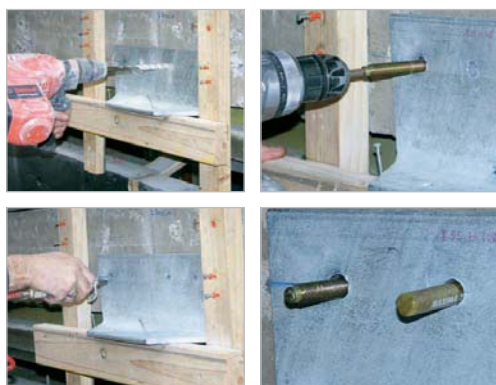
### Specification

Maxima 7 Spin Capsule is a heavy duty, peroxide initiated capsule anchor.

Setting characteristics at 20°C:

- Working time: 15 minutes
- Full cure time: 20 minutes

### Applications



- Fixing to concrete
- Curtain walling support
- Heavy duty signs
- Brick support

### Approvals

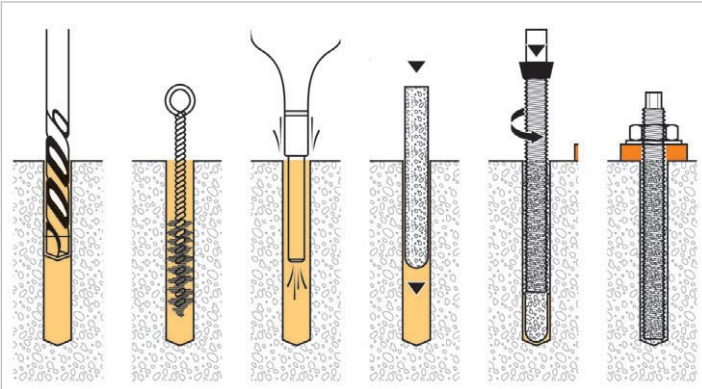


ETA Option 7

### Setting Time

Ambient Temperature (°C)	Dry Concrete	Wet Concrete
$T \geq 20$	20 minutes	40 minutes
$10 < T < 20$	30 minutes	60 minutes
$0 < T \leq 10$	1 hour	2 hours
$-5 < T \leq 0$	5 hours	10 hours

## Installation



1. Drill correct diameter hole to recommended depth.
2. Clean hole thoroughly with brush and air pump twice.
3. Insert capsule.
4. Drive down stud until the depth mark meets concrete surface.
5. After cure time, tighten bolt with torque wrench to recommended torque.

## Product Range - Maxima Spin Capsules

Part No.	Description	Nom Stud Diameter	Capsule Length (mm)	Hole Diameter Ø (mm)	Hole Depth (mm)	Order Qty
8A-MAXI-MA08	MAXIMA M8	M8	80	10	80	10
8A-MAXI-MA10	MAXIMA M10	M10	85	12	90	10
8A-MAXI-MA12	MAXIMA M12	M12	107	14	110	10
8A-MAXI-MA16	MAXIMA M16	M16	107	18	125	10
8A-MAXI-MA20	MAXIMA M20	M20	162	25	170	10
8A-MAXI-MA24	MAXIMA M24	M24	200	28	210	10
8A-MAXI-MA30	MAXIMA M30	M30	260	35	280	5

## Maxima 7 Spin Capsules - Indicative Design Loads in Concrete - Chemset™ Anchor Studs

Thread Ø	Hole Ø (mm)	Embedment Depth (mm)	Torque (Nm)	Anchor Spacing (mm)	Edge Distance (mm)	Shear Load (kN)*	Tension Load (kN)*
M8	10	80	10	160	80	9.5	13.2
M10	12	90	20	180	90	15.0	20.9
M12	14	110	30	220	110	21.9	30.3
M16	18	125	60	250	125	39.2	54.4
M20	25	170	120	340	170	61.2	69.9
M24	28	210	200	450	210	88.1	96.5
M30	35	280	400	560	280	130.5	150.4

# Indicative design load (kN) with ChemSet™ Grade 5.8 Studs in 30N/mm<sup>2</sup> concrete

\* Refer to Ramset Design Guide for more information or explanation of technical data